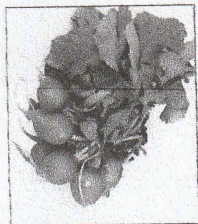
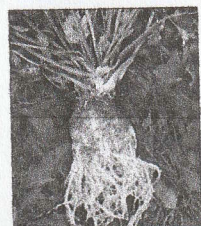


ZELENINA

KOŘENOVÁ



*ředkev setá
(ředkvička)*



miřík celer



mrkev setá

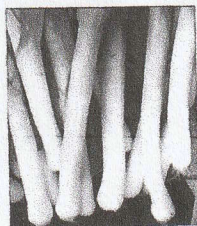
CIBULOVÁ



česnek kuchyňský



cibule kuchyňská



pór zahradní

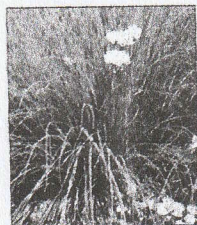
LISTOVÁ



*locika setá
(salát)*



kapusta

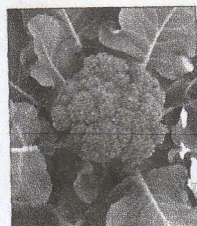


pažitka pobřežní

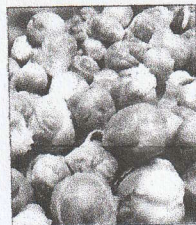
KOŠTÁLOVÁ



květák

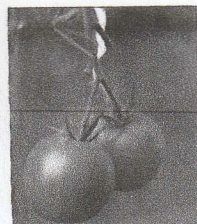


brokolice



růžičková kapusta

PLODOVÁ



lilek rajče



okurka setá



hrách setý